

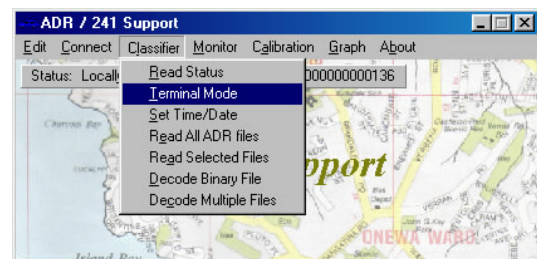
TrafWin



TrafWin is a suite of programs to provide users of Peek (and others) traffic recorders a “one stop” software package for downloading, verifying, analyzing, and reporting data.

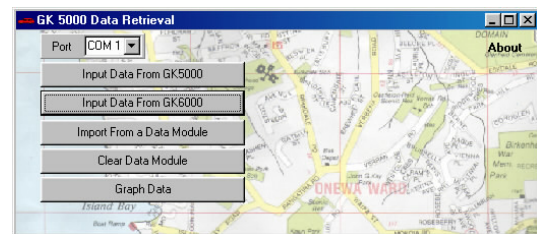
ADR – Downloading and management Tool

- Used for working with ADR Traffic Counters.
- Downloads, decodes and categorized ADR Logger data.
- Graphing option for quick validation.



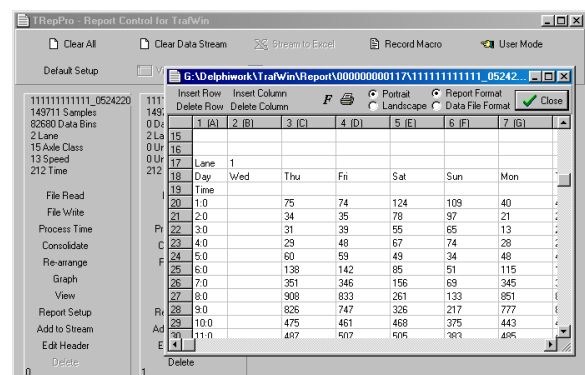
GK5000 – Downloading and management Tool

- Used for working with the older GK traffic counters.
- Down GK5000 and GK6000 Logger data.
- Graphing option for quick validation.



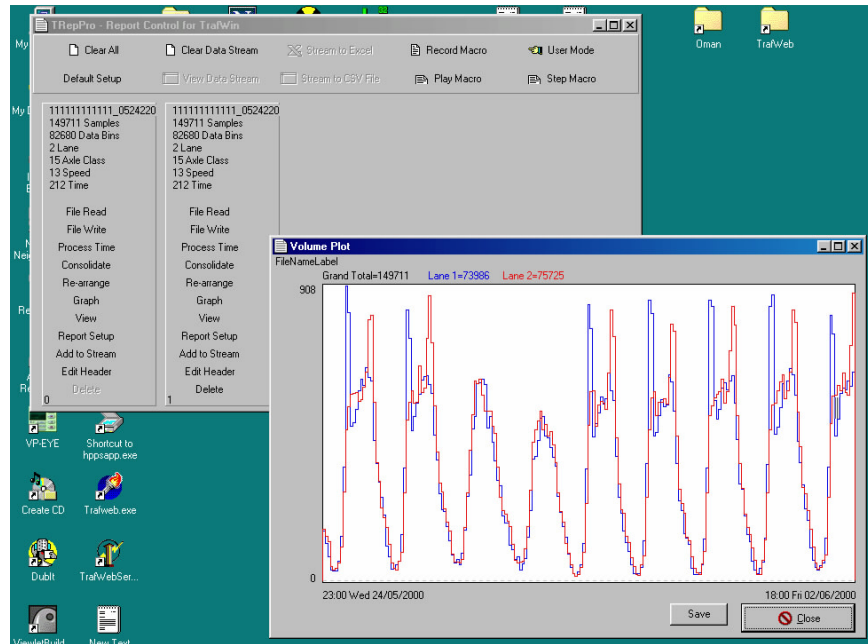
TrafRep Data Analysis and Reporting

- Takes data and prepares it into reports.
- Many analysis options are available, as well as spread sheet interfaces.



TrafRep

TrafRep takes the data from traffic counters and turns it into information.



Data Analysis

- ⇒ Processes data from GK5000 loggers and ADR loggers.
- ⇒ Combines separate files from different time intervals into a single report.
- ⇒ Combines data from multiple loggers on different lanes into a single multilane report.
- ⇒ Allows the storage of processed results for further processing at a later date.
- ⇒ Allows trimming of redundant data from start of file (samples from start to midnight).
- ⇒ Allows trimming of redundant data from end of file (samples after the report period).
- ⇒ Allows selection of peak only information.
- ⇒ Allows reduction of the number of samples (e.g. converts 15min data to 1 hour data).
- ⇒ Allows modification of the binned data structures.
- ⇒ Rearranges the data to produce reports in various formats.
- ⇒ Previews the report data.
- ⇒ Allows very flexible configuration of the date formats.
- ⇒ Allows customization of the report format.

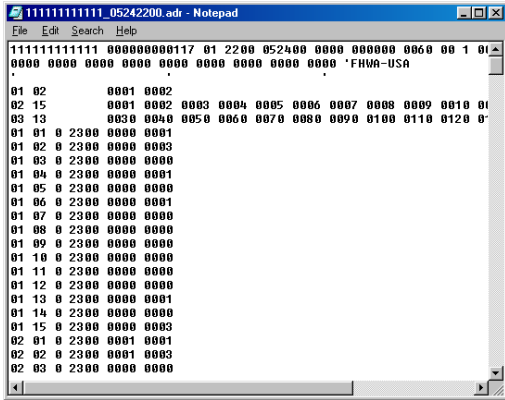
Transfer to Spread Sheet

- ⇒ Can produce *.csv files for importing into any spreadsheet/database.
- ⇒ Directly interfaces into Excel to produce customised reports.
- ⇒ Can transfer data into an existing Excel spreadsheet. This may be a "template" file.
- ⇒ Can automatically initiate Excel macros for subsequent data processing and printing.
- ⇒ Can run Excel visibly or invisibly, and optionally close Excel after printing.

Macro Recording Capability

- ⇒ Uses macros for efficient repetitive processing of data.
- ⇒ Provides a "User" interface so that untrained users can easily select a macro for a report.
- ⇒ Macros are stored in an easy to edit text format.
- ⇒ Macros can be "single stepped".

TrafRep can take a single file of raw data like this:



Sample of raw data file from the logger.

It contains : Speed by class by volume data.

And turns it into information like this:

Site 14, Donovan Street, West of McFadzean Drive											
WEEKENDING 1/8/1900 Lane 1, To McFadzean Drive Eastbound											
Vehicle Class	SHORT < 5.5m	MEDIUM 5.5 - 11m	2-4 AXLE TRUCK/BUS > 13m		LONG 3 TO 7 AXLE TRUCKS 11 - 17m						
Date	Day	1	2	3	4	5	6	7	8	9	10
7/16/2001	Mon	33	7751	119	4	148	468	12	8	177	48
7/17/2001	Tue	76	7946	150	4	133	353	7	4	19	48
7/18/2001	Wed	68	8654	163	6	149	351	10	10	22	22
7/19/2001	Thu	43	8086	156	9	133	440	9	13	20	43
7/20/2001	Fri	77	8933	473	31	163	381	15	5	15	25
7/21/2001	Sat	2480	8970	869	29	169	169	5	6	0	0
7/22/2001	Sun	7864	381	11	0	0	56	0	0	0	0
SUMMARY											
5 Day Ave		59	8274	212	11	145	493	11	8	19	37
7 Day Ave		1528	8980	248	12	128	320	8	7	13	27
% of Total		13.27%	68.49%	2.47%	0.40%	1.42%	2.79%	0.87%	0.86%	0.42%	0.23%

Site 14, Donovan Street, West of McFadzean Drive											
WEEKENDING 1/8/1900 Full Width, All Lanes											
Vehicle Class	SHORT < 5.5m	MEDIUM 5.5 - 11m	2-4 AXLE TRUCK/BUS > 13m		LONG 3 TO 7 AXLE TRUCKS 11 - 17m						
Date	Day	1	2	3	4	5	6	7	8	9	10
7/16/2001	Mon	65	17817	2685	5	327	589	32	60	29	55
7/17/2001	Tue	125	11619	301	9	302	477	21	51	29	57
7/18/2001	Wed	123	19422	325	11	310	460	32	77	42	36
7/19/2001	Thu	81	19108	327	18	305	540	27	67	41	53
7/20/2001	Fri	115	20359	640	36	310	485	42	69	30	28
7/21/2001	Sat	2530	17571	756	32	236	230	27	60	3	3
7/22/2001	Sun	7888	9263	64	1	48	75	10	38	3	3
SUMMARY											
5 Day Ave		182	19935	376	16	314	512	31	65	32	46
7 Day Ave		1561	17430	369	16	265	489	27	60	24	34
% of Total		6.89%	75.91%	1.69%	0.87%	1.45%	1.76%	0.42%	0.26%	0.16%	0.16%

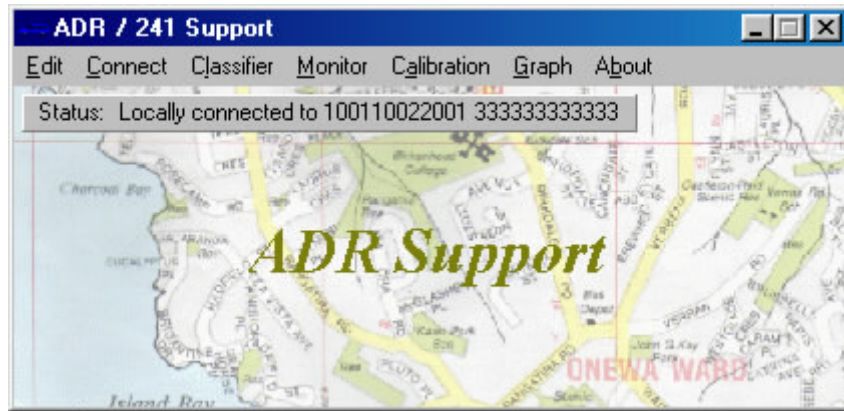
Site 14, Donovan Street, West of McFadzean Drive											
Week Ending 1/8/1900 Lane 1, To McFadzean Drive Eastbound											
85th Percentile Speed (KPH)											
Day	Mon	Tue	Wed	Thu	Fri	Sat	Sun	5 Day 85th	7 Day 85th		
Hour End	7/16/2001	7/17/2001	7/18/2001	7/19/2001	7/20/2001	7/21/2001	7/22/2001	Percentile	Percentile		
7:00	72	71	68	70	71	58	38	70	64		
8:00	68	68	68	68	58	38	69	58	58		
9:00	70	70	76	58	38	73	61				
10:00	73	84	76	70	72	58	38	76	67		
11:00	75	75	76	74	73	58	38	75	67		
12:00	73	73	72	70	71	58	38	72	65		
13:00	64	63	64	63	63	58	38	64	59		
14:00	46	64	54	47	56	58	38	50	50		
15:00	58	37	46	53	52	58	38	49	49		
16:00	60	60	62	60	60	58	38	60	67		
17:00	63	61	62	61	61	58	38	62	58		
18:00	63	60	61	60	60	58	38	61	57		
19:00	63	63	64	62	60	55	38	62	58		
20:00	64	62	62	61	60	48		62	60		
21:00	63	61	63	60	60	48		61	59		
22:00	59	60	59	60	59	48		59	58		
23:00	60	60	63	62	60	38		61	57		
24:00	60	59	62	60	59	38		59	66		
25:00	61	62	62	61	58	38		61	57		

Site 14, Donovan Street, West of McFadzean Drive																
Tubes Uplifted 1/8/1900 Full Width																
Day																
		Monday 7/16/2001			Tuesday 7/17/2001			Wednesday 7/18/2001			Thursday 7/19/2001			Friday 7/20/2001		
Hour End	Class 1-3	Class 4-13	Un classified	Class 1-3	Class 4-13	Un classified	Class 1-3	Class 4-13	Un classified	Class 1-3	Class 4-13	Un classified	Class 1-3	Class 4-13	Un classified	
0-1	116	4	7	143	4	5	168	4	4	184	9	7	184	7		
1-2	52	0	4	68	0	2	100	2	2	83	3	2	115	2		
2-3	25	1	4	46	1	1	58	2	2	45	0	2	65	0		
3-4	32	5	8	47	1	3	43	1	3	49	2	4	52	0		
4-5	73	2	19	80	7	12	84	2	11	100	4	10	110	4		
5-6	175	14	61	195	16	35	203	7	27	247	5	35	225	8		
6-7	685	81	296	764	48	223	766	53	136	708	47	166	765	48		
7-8	447	167	726	572	128	634	991	96	451	558	149	667	339	104		
8-9	1180	121	391	709	122	686	797	144	554	918	143	498	857	136		
9-10	4238	73	235	1352	68	184	1293	70	186	1277	77	192	1419	70		
10-11	914	88	144	1016	53	95	1052	55	98	1444	65	129	1698	62		
11-12	1025	58	103	1011	51	117	1036	69	108	1041	53	121	1125	68		
12-13	1012	60	104	992	55	96	1056	60	115	1103	48	115	1126	68		
13-14	1047	63	101	1003	47	97	1222	66	107	1138	59	103	1190	58		
14-15	1046	58	119	1121	68	102	1121	56	117	1143	68	136	1297	58		
15-16	1383	75	117	1346	75	99	1364	73	170	1389	74	139	1423	65		

The intimate relationship of TrafRep and Excel makes the creation of these complex reports simple. Both TrafRep and Excel contain significant processing capability. Both record macros. TrafRep is used to

manipulate the data into the correct format (a difficult task in Excel). Excel is used to display, format, graph and print these spreadsheets.

ADR

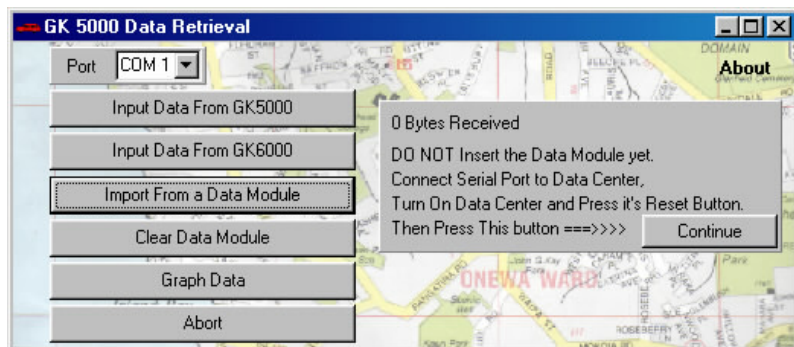


ADR is used to set up and down load data files from ADR loggers. It operates with a direct connection, or a dial in connection (typically to a cell phone in the logger). It is possible to set up the logger as full remote terminal to control the logger.

Logger Data is downloaded into PC files using file selection tools. The data is automatically converted to ASCII, suitable for use with TrafRep, but a binary file backup copy is also saved. Data files are categorized by site location and date, making future retrieval and processing of data easier.

The program also includes plotting for field verification of data. For complicated log schedules like speed/class/volume, data is reduced to volume only and plotted lane by lane. This plotting (similar to that in TrafRep shown above) gives an immediate view of the data, and faults such as loss of tubes are immediately apparent. These graphs can be saved as bitmap files with the site ID, date and time imbedded in them, making them a good QA tool.

GK5000



GK 5000 is used to download data from GK5000 GK6000 and data ports. Like ADR is has the capability to plot the data as an on site verification.

Scott Technical Instruments Ltd New Zealand

14 Bandon Street Hamilton New Zealand.

Ph. +64 7 847-0646

Fax +64 7 847- 0647

www.scottech.net

info@scottech.net