

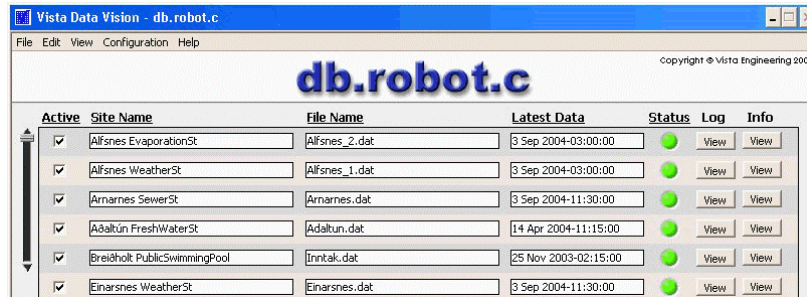
Vista DataVision – Data Management Software

db.robot.c

db.robot.c is used to build and maintain the database for storing, editing and deleting data originating from original Campbell .dat files.

Supported dataloggers

Campbell Scientifics' dataloggers: CR1000, CR10(X), CR510, CR500, CR200 Family, CR5000
Fixed Array based or table based data structures



Features

Database

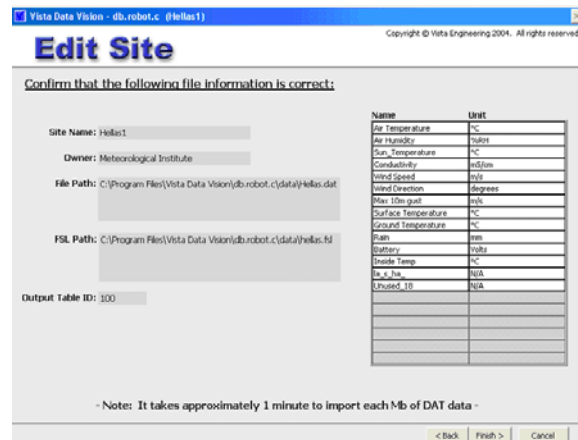
- Incorporates MySQL relational high performance and reliable database.
- Imports Array based data in .dat text files, using the default names from .fsl files if they exist, or the user may define aliases
- Imports Table based data in .dat text files, using the names from the file header
- Stores data with a timestamp from 1 second and up
- Automatic calculations for each variable eg sum, max, average, min and load factor.
- Advanced users can access data in the database using SQL instructions.
- Number of dataloggers supported – Base: 12; Standard: 50; Pro: 500

User configuration

- Use any language for the naming of Sites, Customers and Variables
- Alias naming of variables to meaningful names (eg Instead of temp, use Air Temp °C as name)
- Each variable from the data logger can be associated with an engineering unit (°C, l/s, kW, %RH)
- Over 50 Engineering units built in, user can configure own engineering units.

File modification

- Allows relocation of .dat files
- Import of modified data to insert or overwrite data in the database
- Import of data with a changed structure (eg if variables added or deleted in the data logger)



db.robot.c can be used as stand-alone application, used with other Vista products or accessed by third party products using SQL instructions

SYSTEM REQUIREMENTS

Operating System: Win 2K, Win 2K Professional, Win XP Home/Professional, Win Server 2000/2003

CPU: 400MHz or faster. 1GHz or faster is preferable and does greatly improve overall response.

RAM: 128 Mbyte or more. 512Mbyte is preferable and does greatly improve application response.

Hard Disk: Minimum space available on hard disk for installation: 60Mbyte. Additionally 3Mbyte/year* of hard disk space is needed for each .DAT file imported into the Data Base (*Based on 10 data columns and 15 minutes sample time).